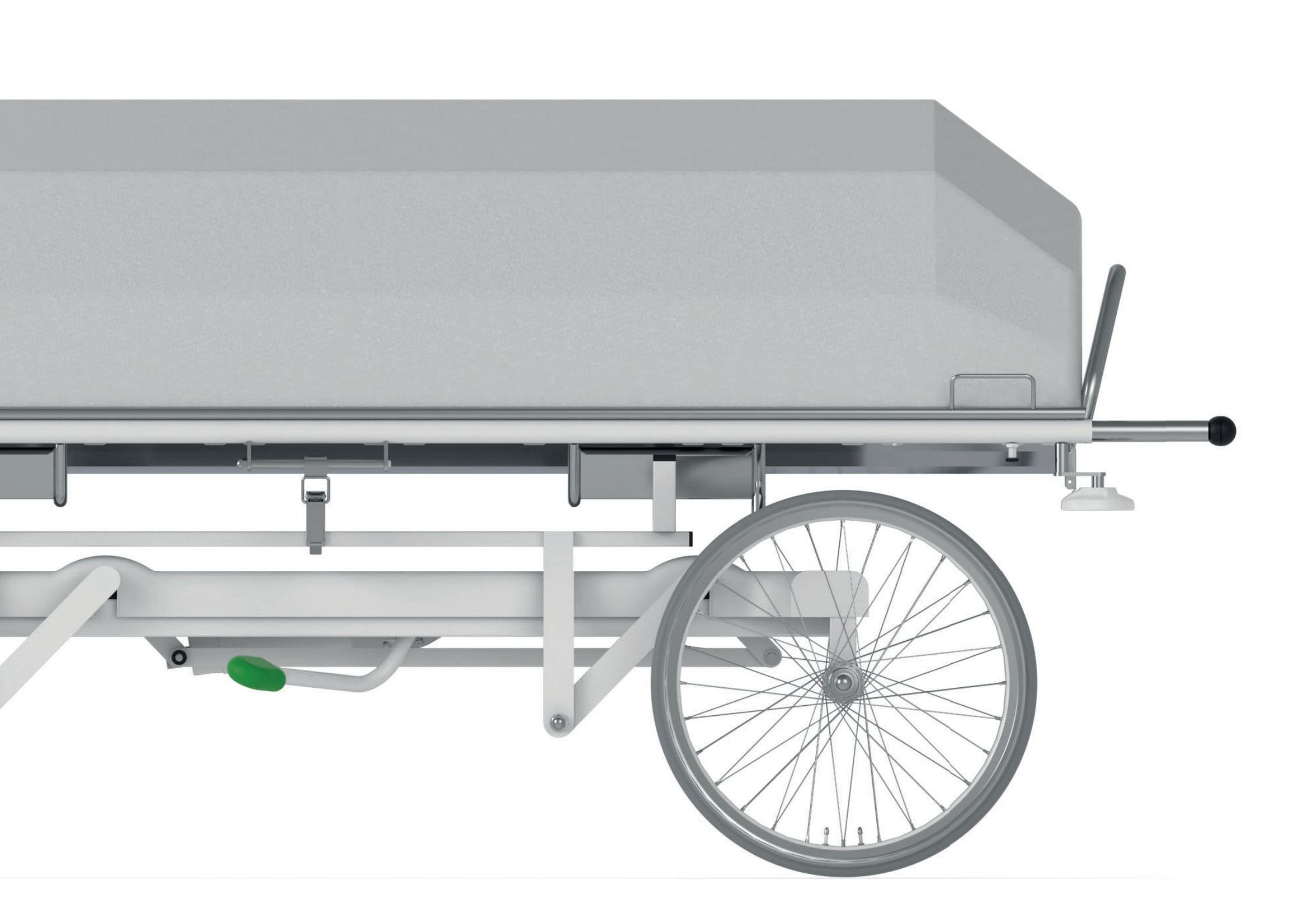




# CHARON

Deceased transfer trolley



# CHARON

The deceased transfer trolley is a high quality and comfortable way to transport the deceased with honour and respect.

The Charon deceased transport trolley guarantees first and foremost the protection and dignity of the deceased. Like all our products, this trolley excels in professional workmanship down to the last detail. Hospital staff will especially appreciate the very easy handling, which allows easy transport in different areas. The Charon transport trolley is also designed for outdoor use.



# 230 kg

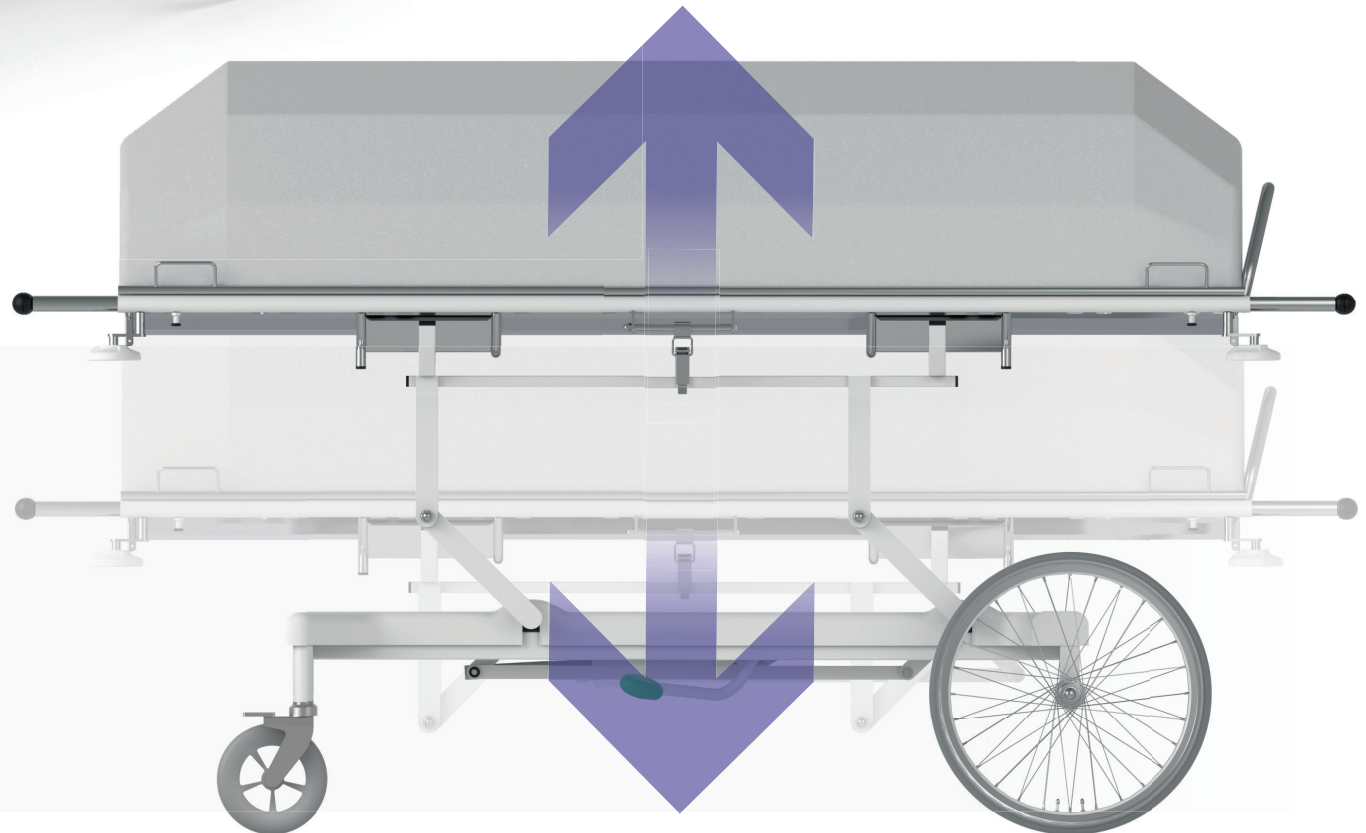


## Safe operating load

Solid and stable construction with a load capacity of up to 230 kg. Thanks to the materials and technologies used, extremely high durability is ensured even under repeated increased loads.

## Hydraulic lifting mattress platform

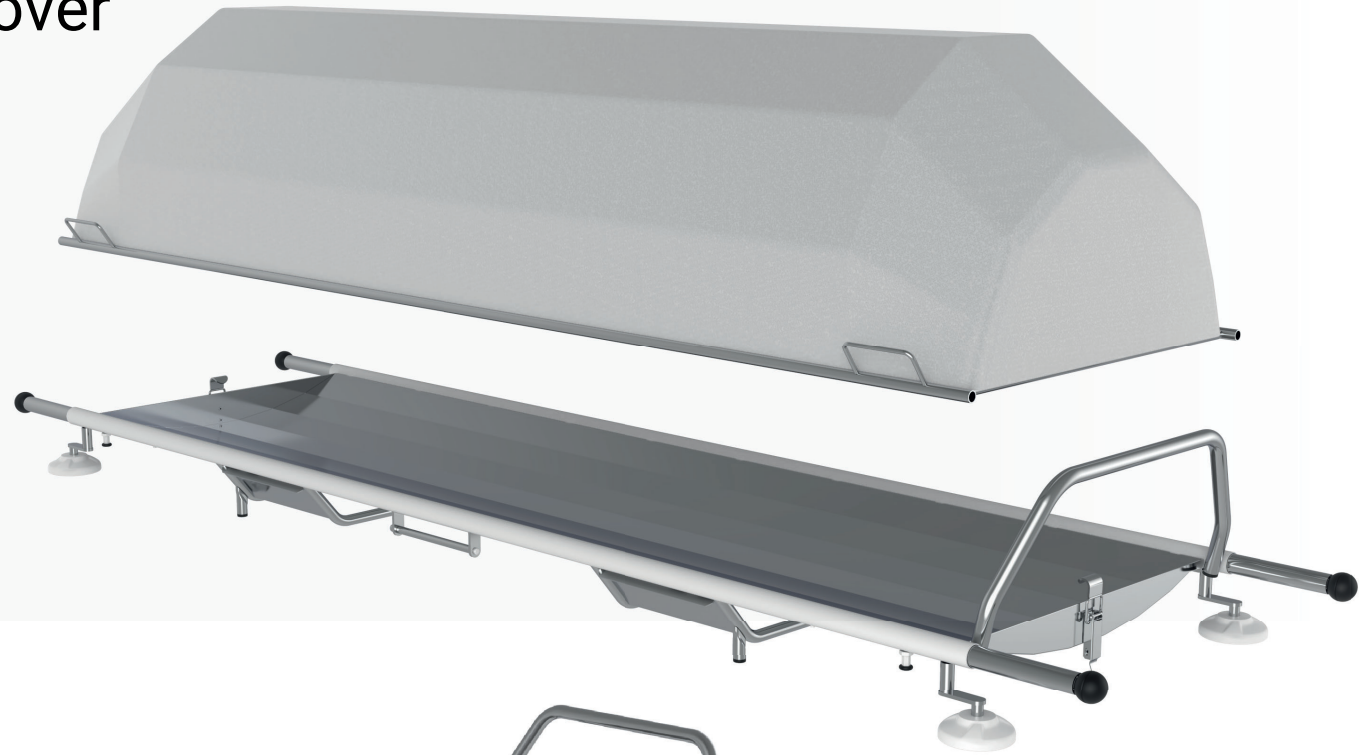
The hydraulic mechanism allows for infinite adjustment of the loading height of the trolley.





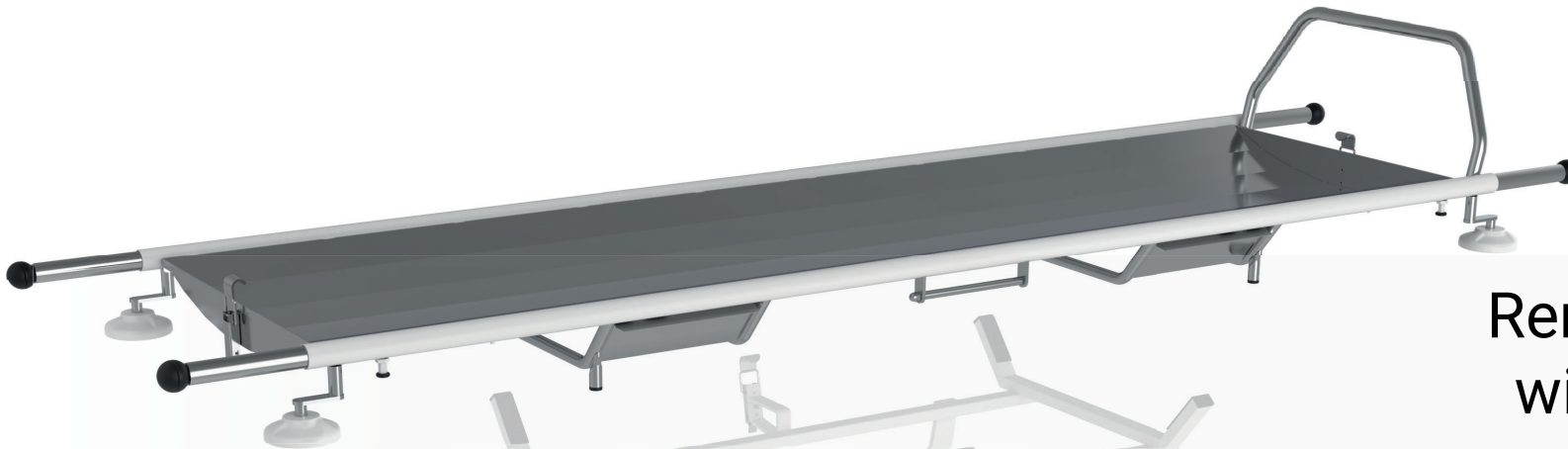
## Lightweight removable cover with washable surface

The washable cover is easily removable and allows for simple cleaning and disinfection after each use, which is key to maintaining cleanliness and hygiene.



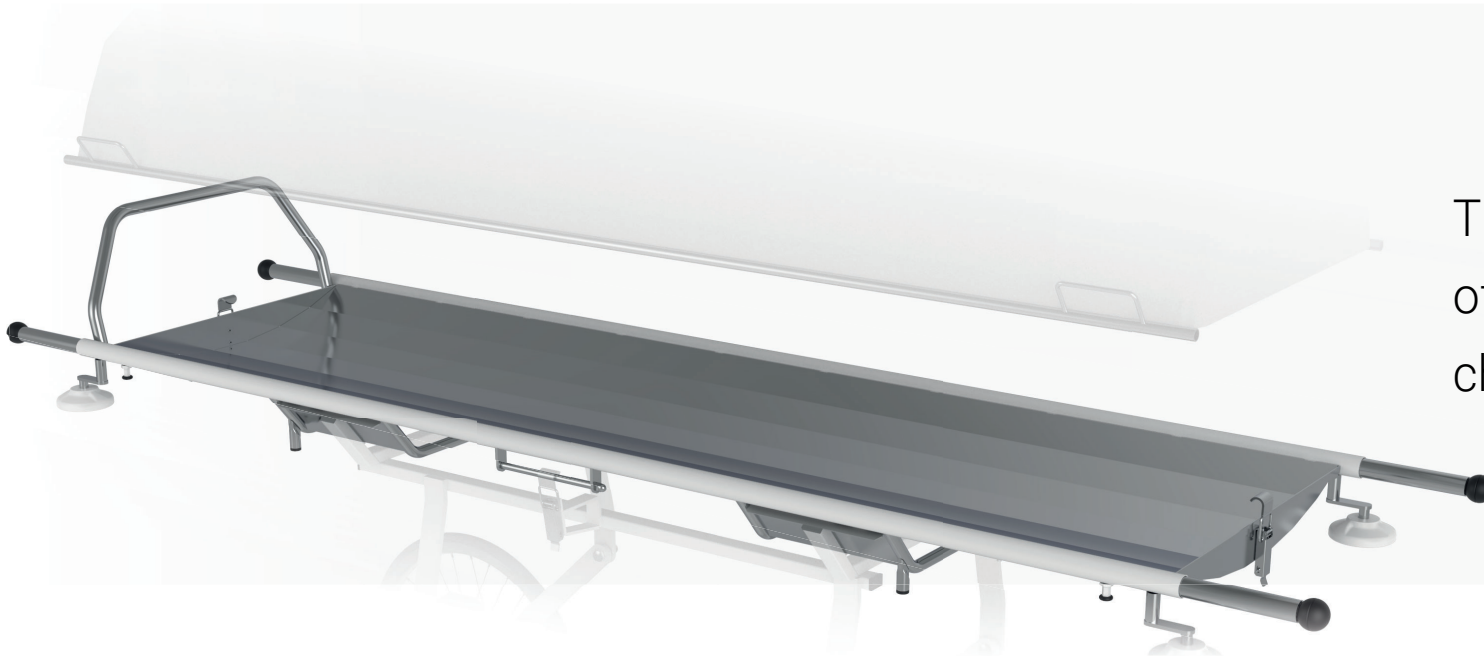
## Removable stretcher with stainless steel mattress platform

Stretcher on trolley are easily removable, making it easy to transfer the body of the deceased to a vehicle or other location.



## Stainless steel mattress platform

The stainless steel material offers high corrosion and chemical resistance ensuring easy maintenance and cleanliness of the trolley.



## High-quality castors for outdoor use

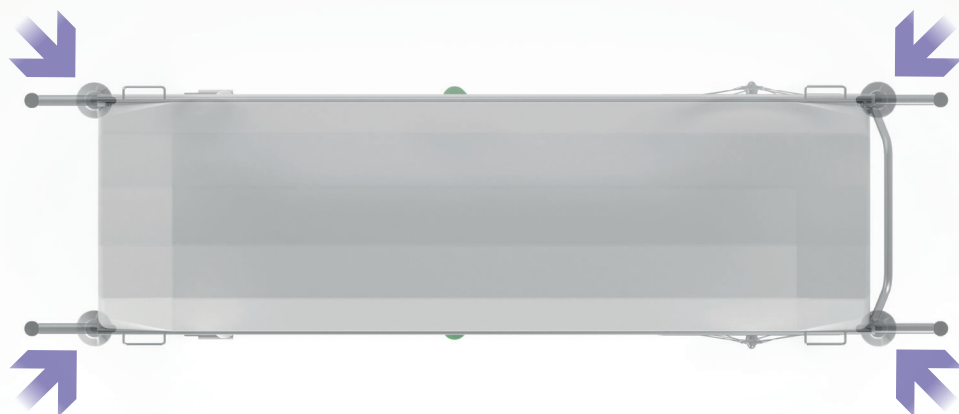
High-quality wheels reduce physical effort during transport. They are made of durable, non-marking material.



## Telescopic handles for easy transport



## Bumper wheels



## Technical parameters

Type of chassis.....lever mechanism  
 Mattress platform length ..... 197 cm  
 Mattress platform width ..... 60 cm  
 Outer bed dimensions ..... 70 x 216 cm  
 Mattress platform height ..... 60 - 97 cm  $\pm$  0,5 cm  
 Lifting of mattress platform ..... hydraulic  
 Castors ..... 200 mm, metal + 520 mm, wired

Weight.....90 kg  
 Safe operating load .....230 kg  
 Maximum patient weight .....195 kg

Material of stretcher ..... stainless steel  
 Material of cover..... fabric, removable

## Bed equipment

Plastic chassis cover  
 Bumper wheels



