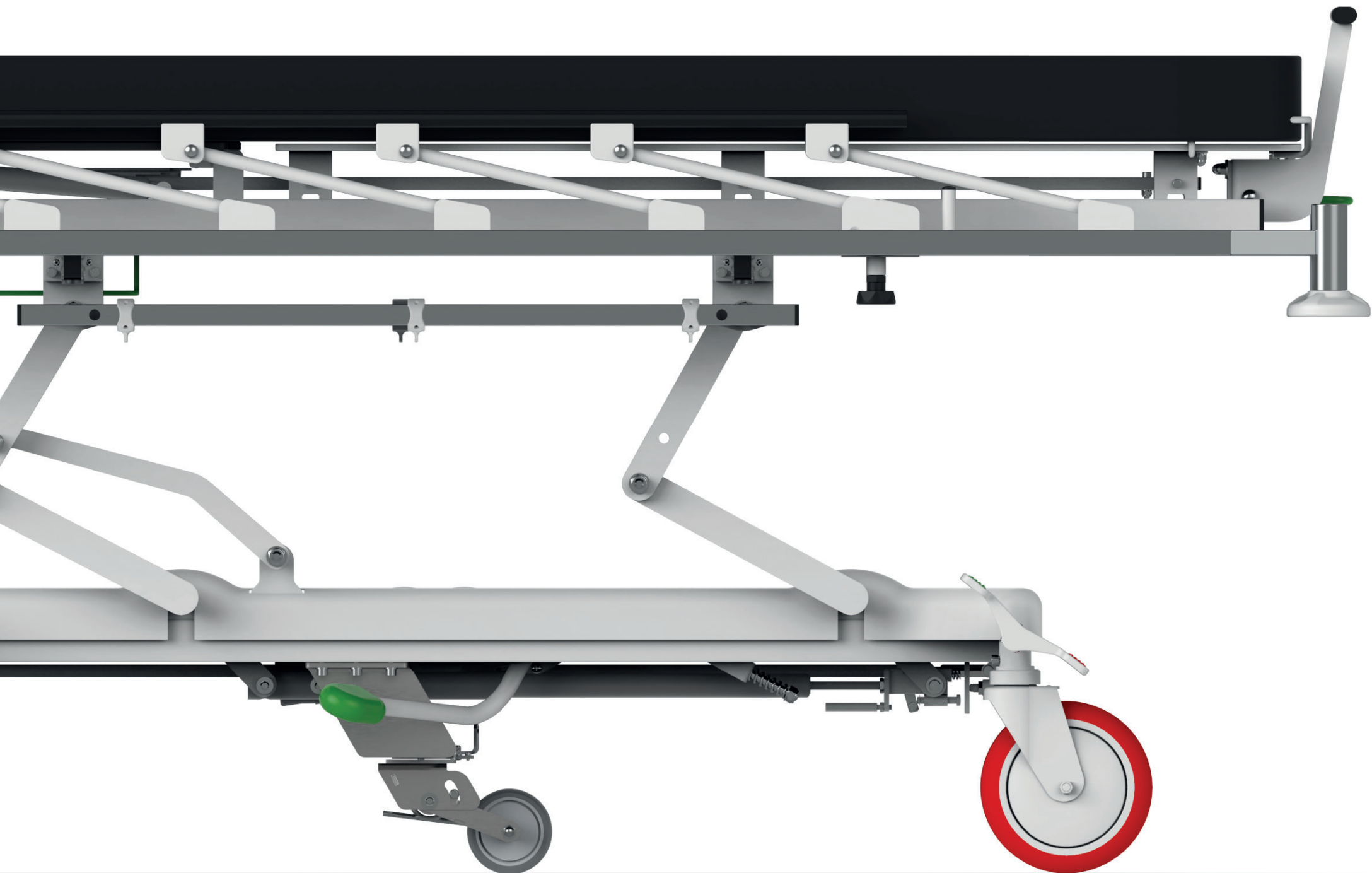


URGENT TOP
Transport stretcher



URGENT TOP

Transport stretcher for fast and safe transport of patients

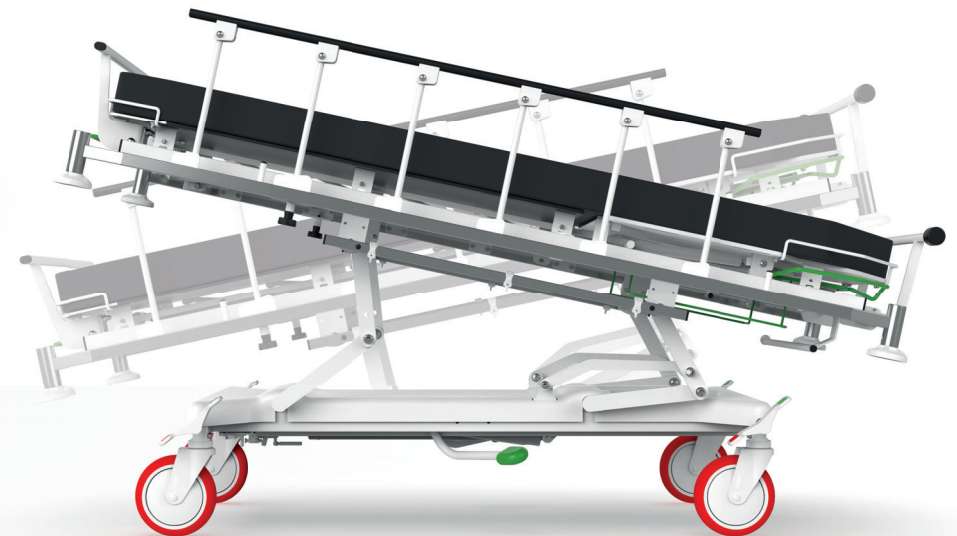
Medical staff will appreciate the easy handling, ergonomic and intuitive controls and the full range of functions. Large castors and a lightweight design ensure high mobility and easy handling. The handrails are equipped with the SAFE GAPS safety system, which eliminates the risk of pinching or trapping the hands during folding. URGENT TOP can be complemented with a wide range of optional accessories.





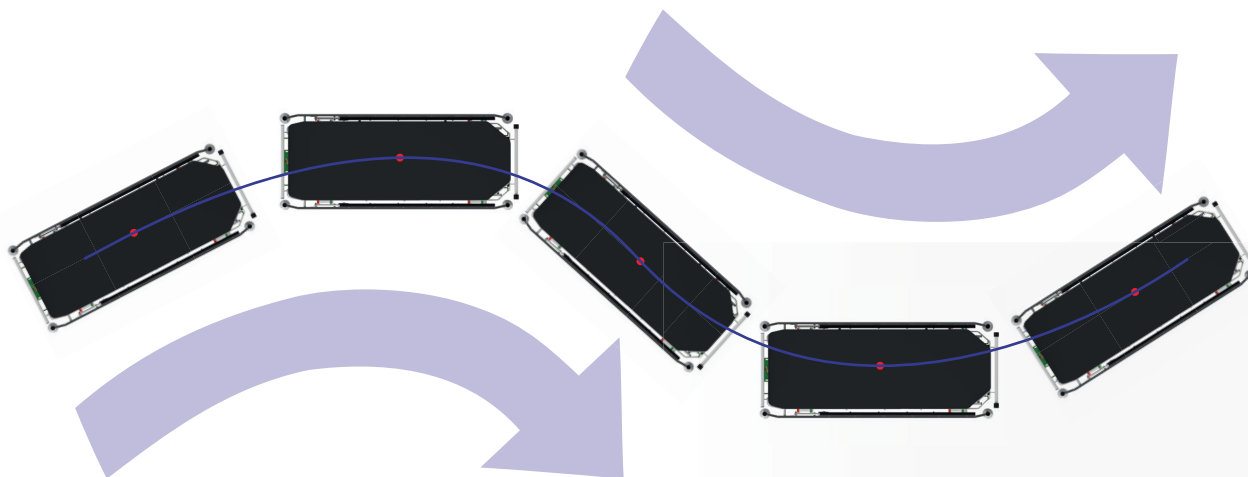
High load capacity

The solid and robust construction with a load capacity of up to 230 kg forms a secure support for patient care.



Trendelenburg / Antitrendelenburg

The stretcher is equipped with a mechanism that allows adjustment of the mattress platform to the Trendelenburg and Anti-trendelenburg positions (12°/12°).

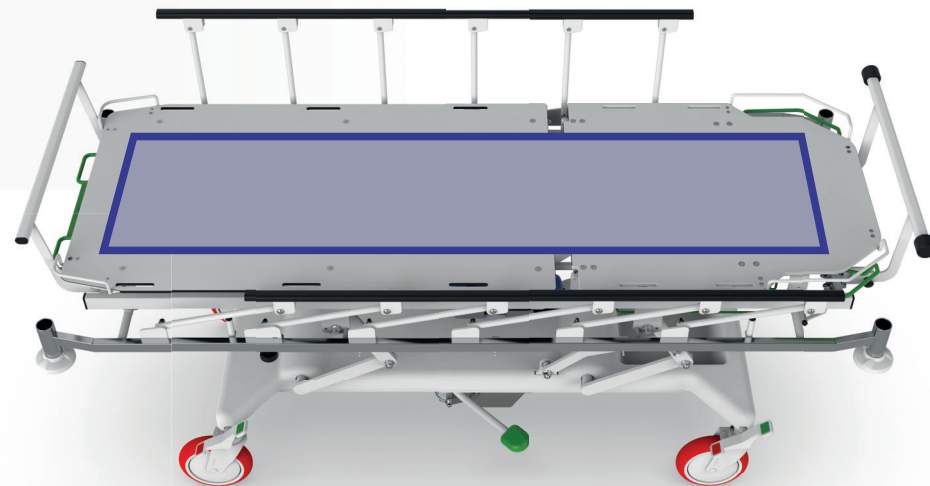
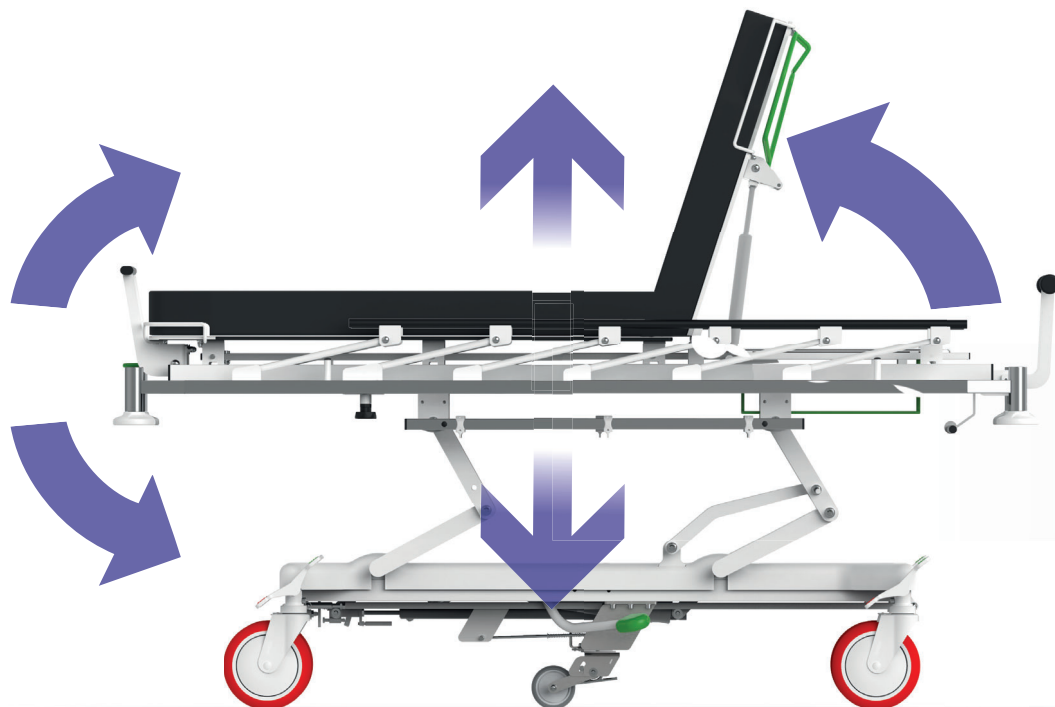


Fifth wheel

The fifth wheel ensures easy and intuitive handling of the stretcher. This feature is particularly appreciated in rugged areas and when handled by one person.

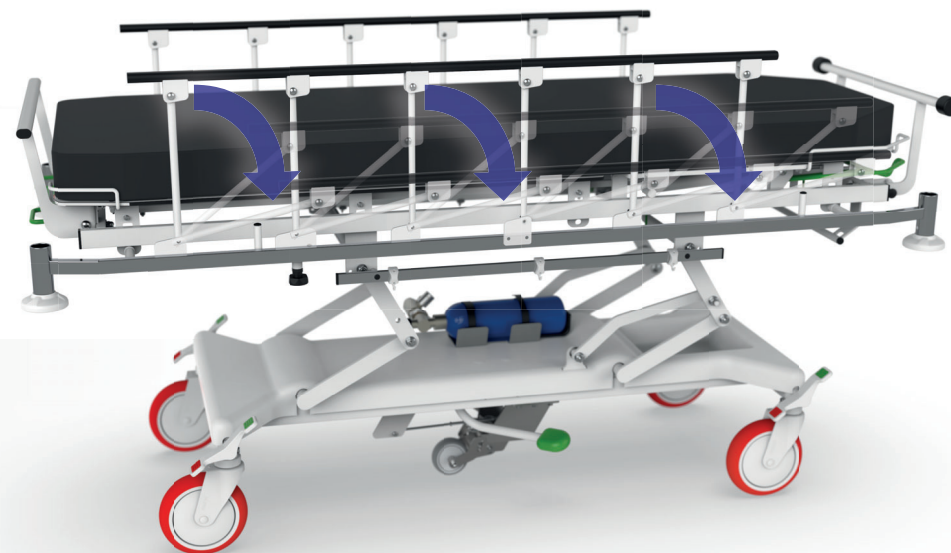
X-rayable mattress platform along the entire length

To speed up the patient examination and facilitate the work of the medical staff, the stretcher is equipped with a full-length radiolucent HPL surface.



Comfortable positioning

The stretcher is hydraulically positionable and completely independent of the power source.

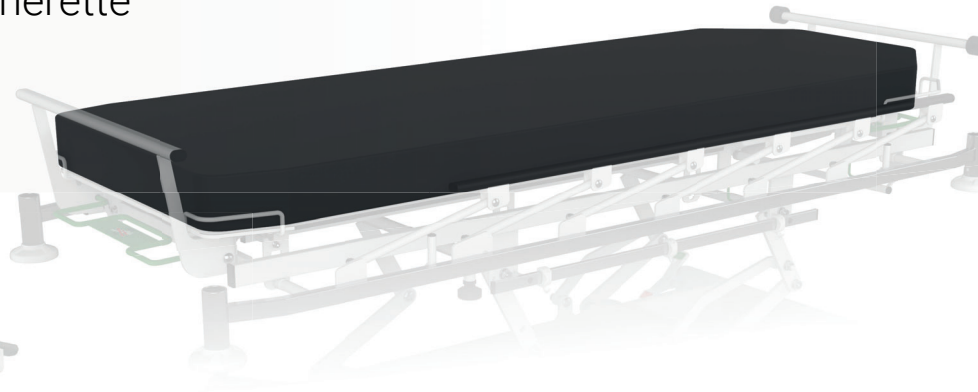


Safe side rails

The protective side rails along the mattress platform can be easily folded down to provide immediate access to the patient. Thanks to the SAFE GAPS safety system, the risk of pinching or trapping the arm during folding is eliminated.

Mattress made of medical leatherette

The comfortable mattress is upholstered in medical leatherette, which has anti-static protection with antimicrobial properties.



Foldable transport handle

Bumper wheels

Infusion stand transport holder below the mattress platform

The infusion stand holder is conveniently placed below the patient surface so that it is always immediately available.

Storage space

Accessory holders

Foldable transport handle at the head section

The transport handle behind the patient's head allows quick folding when necessary, which is especially appreciated during resuscitation.



Paper roll holder

Central brake

e at the head section

Transport handle at the foot section



Safe side rails
With SAFE GAPS safety system

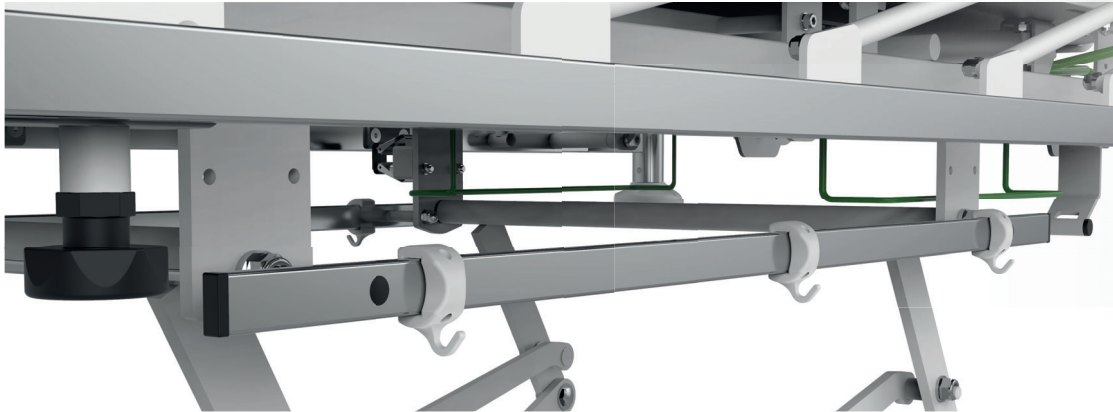
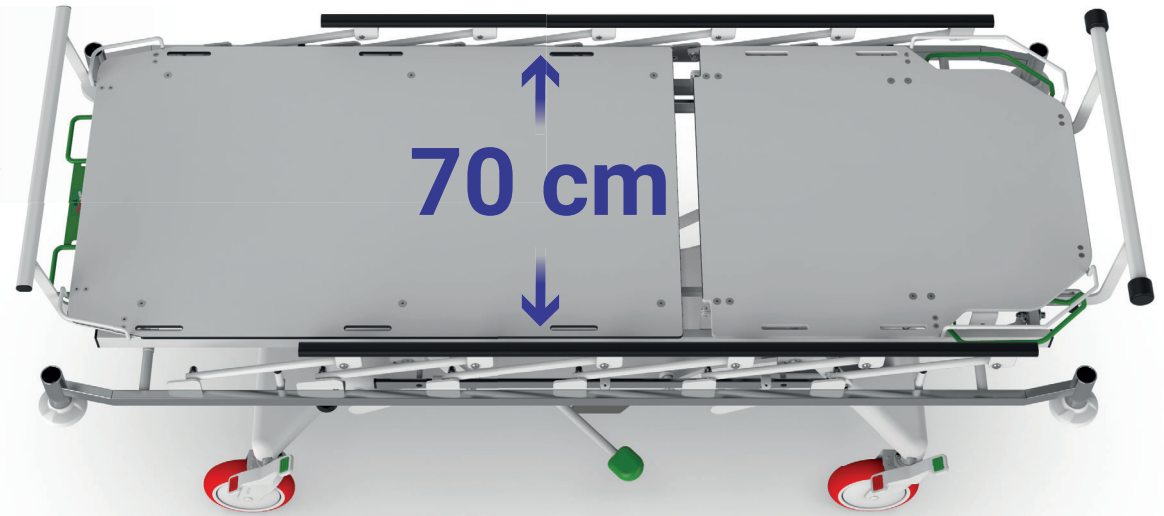
TENTE brand wheels
High-quality anti-static medical castors

Plastic chassis cover

X-rayable mattress platform along the entire length of the stretcher

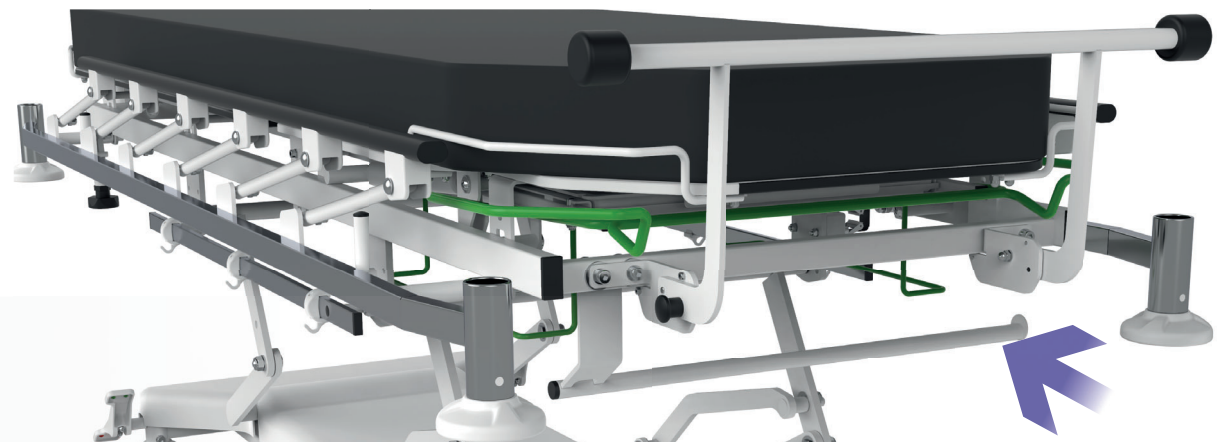
Optimal width

The width of the stretcher guarantees comfortable transport even for larger patients and at the same time allows perfect access for medical staff to the patient.



Horizontal accessories holder

The standardized stainless steel euro rail for hanging accessories is equipped with three universal plastic hooks on both sides of the stretcher.

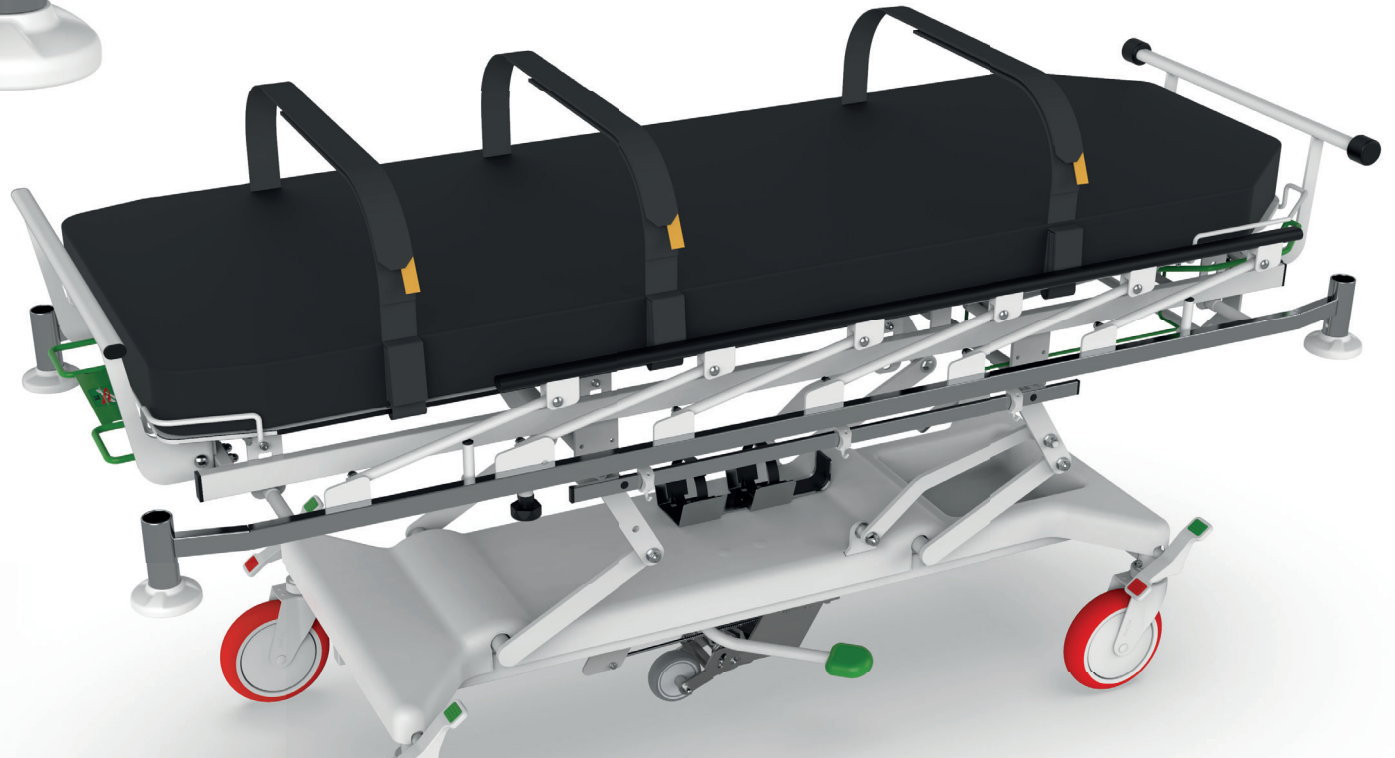


Paper roll holder

The hygiene paper roll holder can be found under the mattress platform.

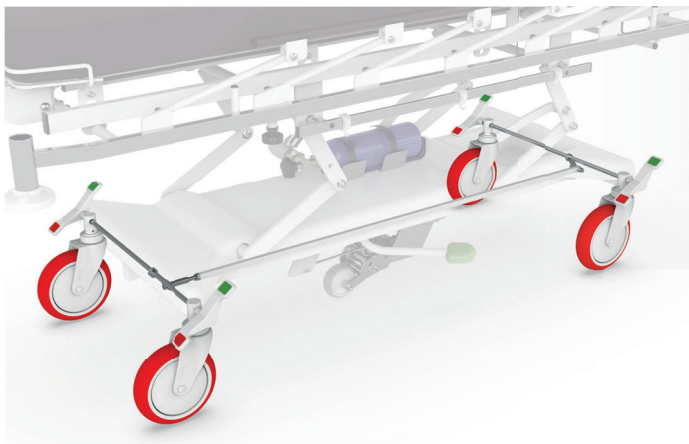
Bumper wheels

The bumper wheels located at the corners of the mattress platform are a great help especially during transport.



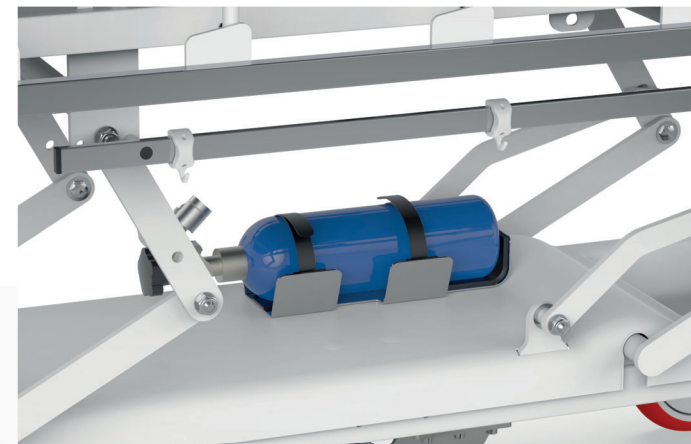
Fixation belt set

A set of three fixation belts is used to secure the patient to the bed during transport, ensuring safe movement.



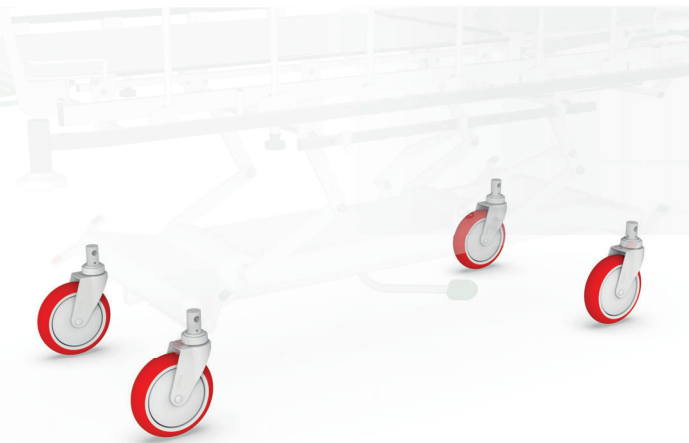
Central brake

The central brake pedals, accessible at both the head and foot sections, allow safe and quick braking. Thanks to the possibility of locking the wheels in the straight direction, the stretcher can be easily operated by only one person during transport.



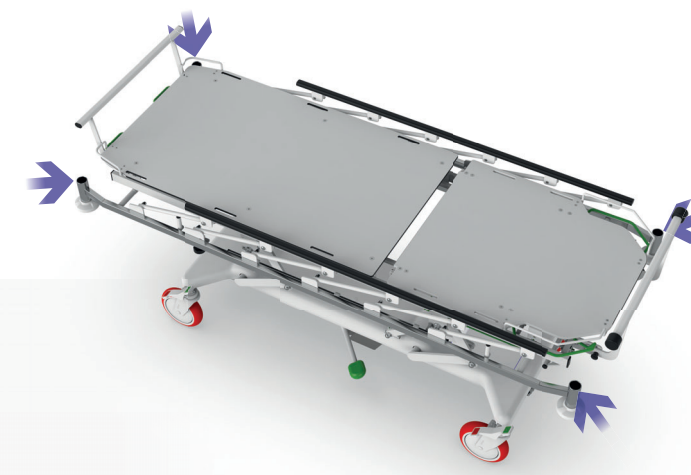
Oxygen bottle holder

The oxygen bottle can be safely stored thanks to the special holder below the mattress platform.



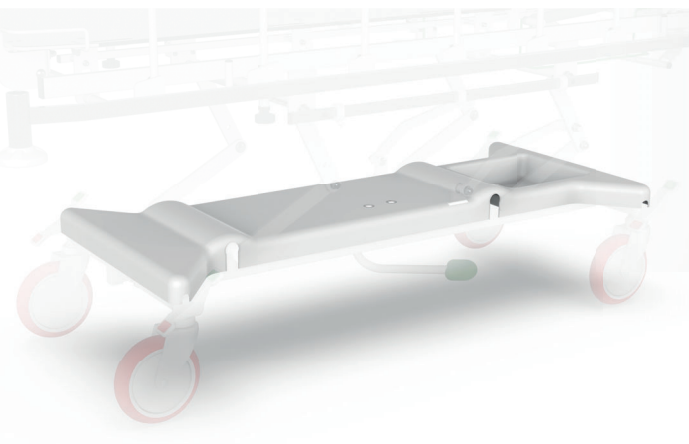
TENTE brand wheels

High-quality anti-static castors, also suitable for outdoor use, reduce the physical effort of staff and, thanks to the covers, facilitate cleaning and significantly extend their service life.



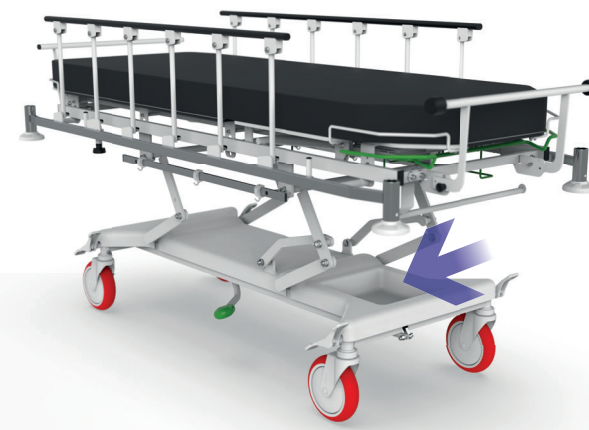
Universal accessory holders

Four universal accessory holders allow the use of accessories such as infusion stands or monitor holders.



Plastic chassis cover

The plastic cover makes daily cleaning of the stretcher easier and faster. It also protects the chassis mechanisms, thus extending the life of the individual components and the overall reliability of the stretcher.



Storage space

The patient's personal belongings can be stored in the compartment under the mattress platform.

Technical parameters

Mattress platform	200 x 70 cm
Outer dimensions	216 x 88,5 cm
Mattress platform height	57 - 94 cm
Lift of mattress platform.....	Hydraulic
Trendelenburg / Antitrendelenburg	12° / 12°
Back part positioning	0° - 85°
Safe operating load	230 kg
Maximum patient weight	195 kg
Weight.....	90 kg
Material of mattress platform.....	HPL
Castors	200 mm metal
Type of brake.....	Central
X - Ray of mattress platform.....	Yes
X - Ray cassette holder.....	40 x 49 cm
5th wheel.....	Yes
Plastic undercarriage cover.....	Yes
Bumper wheels	Yes
IV pole holder.....	Yes
Trasport holder of IV pole under the mattress platform	Yes
Transport handrail foldable to head	Yes
Transport handrail to foot.....	Yes
Oxygen bottle holder	Yes
Horizontal accessories holder	Yes 2x
Plastic hooks for horizontal accessories holder	Yes 6x
Paper roll holder.....	Yes
Set of restraint straps	Yes (optional)
Monitor shelf	Yes (optional)



